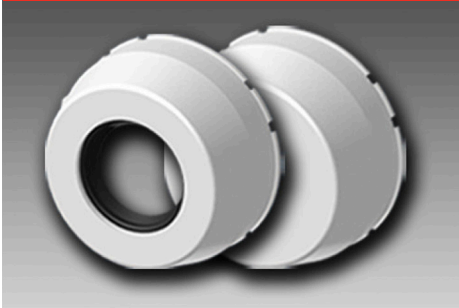


Safety Covers



Our covers, specifically designed for our mounted units, offer more than just protection against daily washdown and contamination. They also meet OSHA and HACCP requirements for safety purposes.

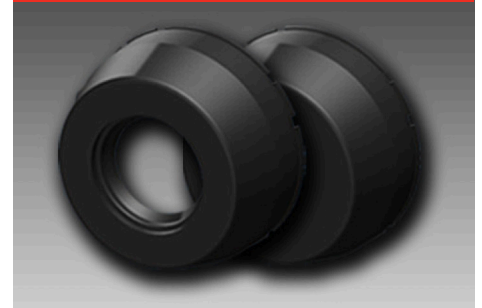
Thermoplastic White



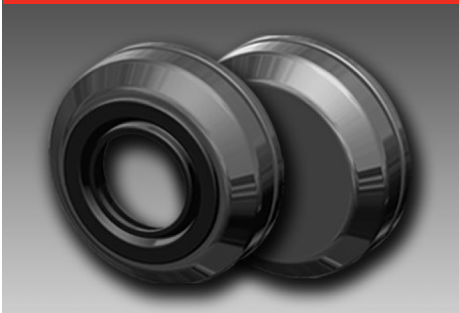
Thermoplastic Orange



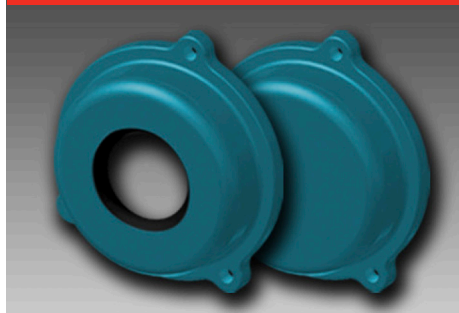
Thermoplastic Black



Pressed Steel



Cast Iron



Pressed Stainless Steel



Material Options

- Thermoplastic (white, black and orange)
- Pressed steel
- Pressed stainless steel
- Cast iron

Type

- Thermoplastic open cover with spring loaded seals
- Thermoplastic closed cover
- Pressed steel and cast iron open cover with rubber seals
- Cast iron closed cover

Sizes

Inch and metric

