

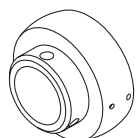
Heavy Duty Mounted Units



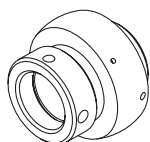
Solutions for Tough Conditions

When your application requires more bearing capacity but the specification will not allow for a larger shaft, AMI Heavy Duty "300 Series" Mounted Ball Bearings are the answer.

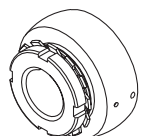
Locking Devices



Set Screw
1" to 4-7/16"
25 mm to 140 mm

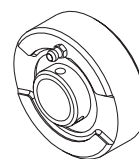
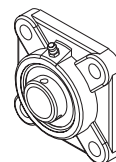
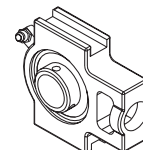
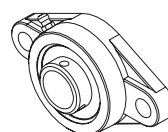
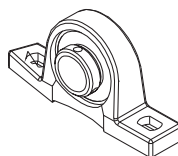


Eccentric Collar
1-7/16" to 3"
45 mm to 90 mm



Adapter Sleeve
3/4" to 4"
20 mm to 125 mm

Housing Styles



Fixed and float assemblies available

Competitor Part #	AMI Equivalent Part #
UCP305-100D1	UCP305-16
UKP309D1;HE2309X	UKP309+HE2309
P-U339	UCPU312-39
PU3K39	UKPU315+HA2315
PE-U339	UCPEU312-39
RSOA 1-11/16	UGSAO309-27
RAO 2-3/16	UGAO311-35
F-U332	UCFU311-32
FE-U332	UCFEU311-32
UCC306D1	UCC306
UCT310D1	UCT310
UC307-107D1	UC307-23
UEL311-203D1W3	UG311-35

Applications



Power
Automotive
Air Handling
Saw Mill
Steel
Paper Mill
Coil
Foundry
Web Press

